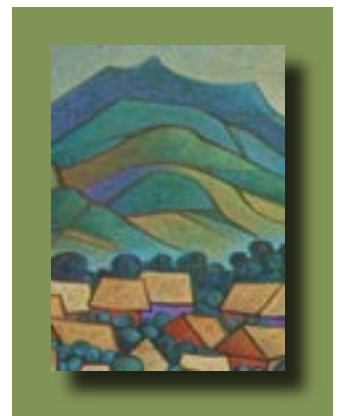
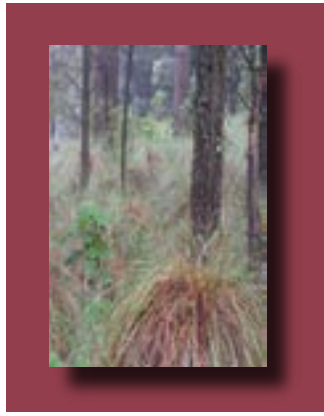


MEXECRI builds strong relationships with Mexican schools, indigenous community councils and municipal governments to form partnerships that provide employment to support autonomous community development.

MEXECRI is dedicated to forming bridges that provide for sustainable environmental and cultural heritage projects that include equitable and alternative grassroots development.



Mexican Environmental & Cultural Development Partnership with Indigenous Communities

MEXECRI volunteers and professionals, from the U.S. and Mexico, work in partnership with migrant communities to promote sustainable long-term development through investment in public education resources and equitable alternative development. Work with us as a volunteer or donor to develop new projects, invest in communities and work with people across borders. Your contributions make a difference in peoples' lives at the grassroots level. Your commitment means a more just world that works across borders and builds bridges, not walls.

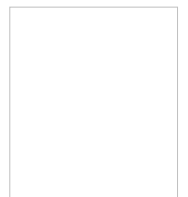


Researchers, like Dr. James Chatters (photo), form the professional binational team that is working on long-term archaeological research in Michoacán. Long considered outside the domain of Mesoamerica, Michoacán, Mexico, is best known for harboring the formidable rivals of the Aztec Empire, the Tarascans (Purépecha). Dr. Chatters is providing invaluable assistance in the identification, description and analysis of human remains. The dental remains below are from an over 4500 year-old skeleton excavated from an ancient cliff site. MEXECRI and the Comunidad Indígena hope to fund the reconstruction of the facial characteristics for educational purposes. This site may hold many answers to questions about early ceremonial and religious practices as well as evidence of early plant domestication.

Archaeological research is targeted in the most ancient sites which have been identified through the partnership with the indigenous leadership. Identification of cultural heritage sites and protection from looters is one of the most important results of the project to-date. Through this work both Comunidad and municipal authorities are collaborating to protect sites that will help us to better understand the past and to preserve these cultural zones for the future. The Comunidad of Nuevo Parangaricutiro has made a commitment to curating their archaeological artifacts and osteological remains through the creation of a community museum. They are supporting this effort through their ecotourism program. Outside support is needed to make their dream a reality and to continue cultural heritage research.



Voice 860-912-9172
mexecri@mexecri.org
www.mexecri.org



**The Mexican Environmental &
Cultural Research Institute, Inc.**
95A Fitchville Rd., Bozrah, CT 06334



Community Partnerships in Mexico

Working in Partnership with Rural Indigenous Communities and Deported Children at the U.S.-Mexico Border

Children, from the Jaime Bodet Elementary School in Nuevo Parangaricutiro, Michoacán benefit from MEXECRI's community-school partnership program. Rural low-income schools can partner with teachers and donors to support



local schools. These partnerships create lasting benefits for local children, like cement floors and windows in classrooms, chalkboards, pencils and paper. These small improvements can mean the difference between staying in school and dropping out.

MEXECRI believes that these small changes can make a big difference in childrens' lives.

Environmental and cultural heritage education is a critical component of the partnership with Mexican indigenous schools. During the past

year, MEXECRI conducted excavations at several prehispanic sites in Michoacán.

As part of the partnership with communities we provided educational workshops to schools. During 2007, we plan to expand this program and construct a small cultural heritage museum with the indigenous community. The museum will provide employment and educational opporutnities with the local community.

MEXECRI believes that we need to build bridges, not walls, with the people of MEXICO. We need to build sustainable communities. We are working to invest in sustainable development in Mexico. This development includes research and education regarding local natural and cultural history and archaeology.

MEXECRI also supports education, research and direct needs at the U.S.-Mexico border. In Ciudad Juárez, Chihuahua, Mexico, Mexican children deported from the U.S. find respite at the local YMCA. Without their parents or relatives, these children need tangible support like blankets, backpacks and purified water. We also believe that their deportation cases, some involving human rights violations and human trafficking, need to be documented through applied research. You can help to directly support this project by designating your donation below.

Cut here

MEXECRI is a 501(c)(3) tax-exempt educational and research organization, run by U.S. and Mexican volunteers. Return this information to mexecri@mexecri.org or mail to: MEXECRI, 95A Fitchville Road, Bozrah, CT 06334.

Yes, I would like to volunteer to help with MEXECRI's programs:

Yes, I would like to contribute to:

- Assisting Deported Mexican Children Housed at CASA YMCA in Ciudad Juarez, Chihuahua.
- Archaeological Research in Parangaricutiro, Michoacan, Mexico
- Developing a Mexican Migrant Human Rights Network in Connecticut
- Public Rural School Construction and Supplies in Parangaricutiro, Michoacan, Mexico
- General Administrative Expenses

Enclosed is my tax-deductible donation for \$ _____.

